



# I N F O R M A T I O N

## B U L L E T I N

### Time Intervals for Criminal Proceedings in Magistrates' Courts: December 2001

By Jacqueline O'Brien

This bulletin presents the results from the December 2001 Time Intervals Survey and for all four 2001 Time Intervals Surveys as a whole. The survey reports on the time taken between stages of proceedings for defendants in completed criminal cases in magistrates' courts. From the February 2000 survey onwards information on adult indictable cases is collected in one week of each quarter. Information on adult summary offences is additionally collected in the first and

third quarters. Information on youth defendants in both indictable and summary cases is collected in four weeks of each quarter. Additionally information is collected on all criminal cases involving persistent young offenders that have been completed since the previous survey. Please see paragraph 1 of the notes section for more details. All references to indictable cases in this bulletin include triable either way cases.

#### MAIN POINTS

##### Indictable cases

- **Reduction in delay:** The average time from offence to completion fell to 107 days in December 2001 from 110 days in December 2000. For 2001 overall, the average time from offence to completion was 111 days – a decrease from 114 days in 2000.
- **Reduction in delay in Youth Courts:** The average time from first listing to completion in the Youth Courts fell from 60 days in December 2000 to 50 days in December 2001.
- **Significant variation in time taken across MCCs:** The average time from first listing to completion varied from 37 days for Lincolnshire to 77 days for Cleveland.

# Time Intervals for Criminal Cases: December 2001

## Introduction

1. This bulletin consists of three sections. This first section includes a description of the results from the December 2001 survey and 2001 overall. The second section contains tables of detailed results from the latest survey and previous surveys while the final section holds methodological notes and further information. Following this introduction the results are in three parts as follows:

- Indictable cases: December 2001 results
- Indictable cases: December 2001 Youth Court results
- Indictable cases: 2001 annual results

2. From the February 1999 survey the rules which excluded from the analysis cases lasting over a year between either charge or laying of information and first listing or between first listing and completion were removed. These rules had been in place from February 1993. The change was implemented to make this aspect of the survey compatible with the statistics on delay

used for monitoring the Government's pledge to halve the time from arrest to sentence for persistent young offenders. These are based on data from the Police National Computer not the Time Intervals Survey. The tables show results both as they would have been if the rules that previously excluded longer cases had been applied and as they are on the new basis. Unless stated all results in the text are on the new basis. Cases lasting longer than 10 years between offence and charge or laying of information have been excluded from the analysis since 1994 – there have been no changes to this rule. More details on the survey methodology can be found in the notes section at the end of the bulletin.

3. The results presented in this report are given per defendant. The December 2001 results for indictable cases are based on a sample of 7,704 defendants while indictable results for the whole of 2001 are based on a sample of 30,354. The notes section contains more information on sample sizes.

## INDICTABLE CASES: DECEMBER 2001 RESULTS

### Time intervals

4. The December 2001 survey reports that the average time from offence to completion for defendants in indictable cases decreased to 107 days in December 2001 from 112 days in March 2001 and 110 days in December 2000. This decrease was primarily due to a fall in the average time from first listing to completion – from 58 days in December 2000 to 52 days in December 2001. This may reflect the introduction of the Narey indictable only initiative by which indictable only cases are sent directly to the Crown Court, usually after one hearing in the Magistrates' Courts, rather than going through committal proceedings. The initiative was rolled out nationally in January 2001.

5. The average time from charge or laying of information to first listing was 7 days in December 2001, unchanged from December 2000. The average time from offence to charge or laying

of information was 48 days in December 2001 an increase from 46 days in December 2000. Figure 1 and table 1 contain further information on time intervals for defendants in indictable cases.

### Adjournments

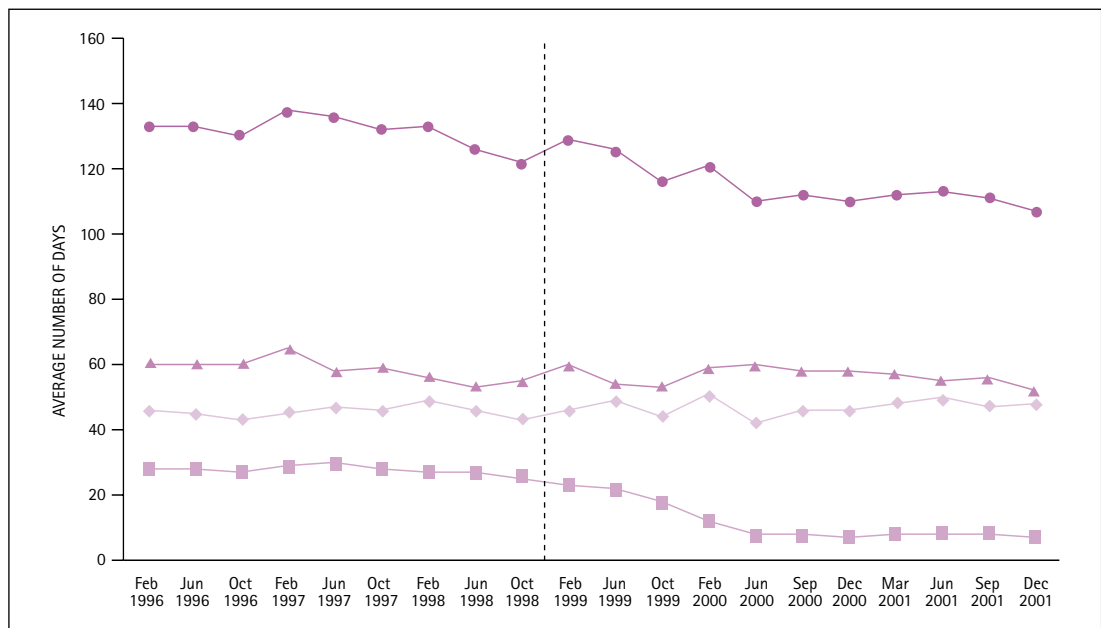
6. As shown in table 2 the average number of adjournments for defendants in indictable cases was 2.1, a decrease from 2.3 in December 2000. The average length of adjournments in December 2001 was 25 days, unchanged from December 2000, although this was a slight decrease from the most recent surveys (average length of adjournments was 26 days in March, June and September 2001). Twenty eight per cent of defendants' cases were completed at first listing – an increase from December 2000 but slightly lower than the percentage recorded in September 2001.

FIGURE 1: Average time by stage of proceedings – defendants in indictable cases, February 1996 to December 2001<sup>1</sup>

1 Note: The dashed vertical line in the chart denotes the changes in survey methodology introduced with the February 1999 survey (see paragraph 5 of the notes section).

#### KEY

- ◆ Offence to charge or laying of information
- Charge or laying of information to first listing
- ▲ First listing to completion
- Offence to completion



## INDICTABLE CASES: DECEMBER 2001 YOUTH COURT RESULTS

7. The average time from offence to completion for defendants in indictable cases in Youth Courts fell to 88 days in December 2001 from 96 days in December 2000. Among the component intervals of the overall average from offence to completion, the average time from first listing to completion fell to 50 days in December 2001 from 60 days in December 2000.

8. The average time from charge or laying of information to first listing remained unchanged

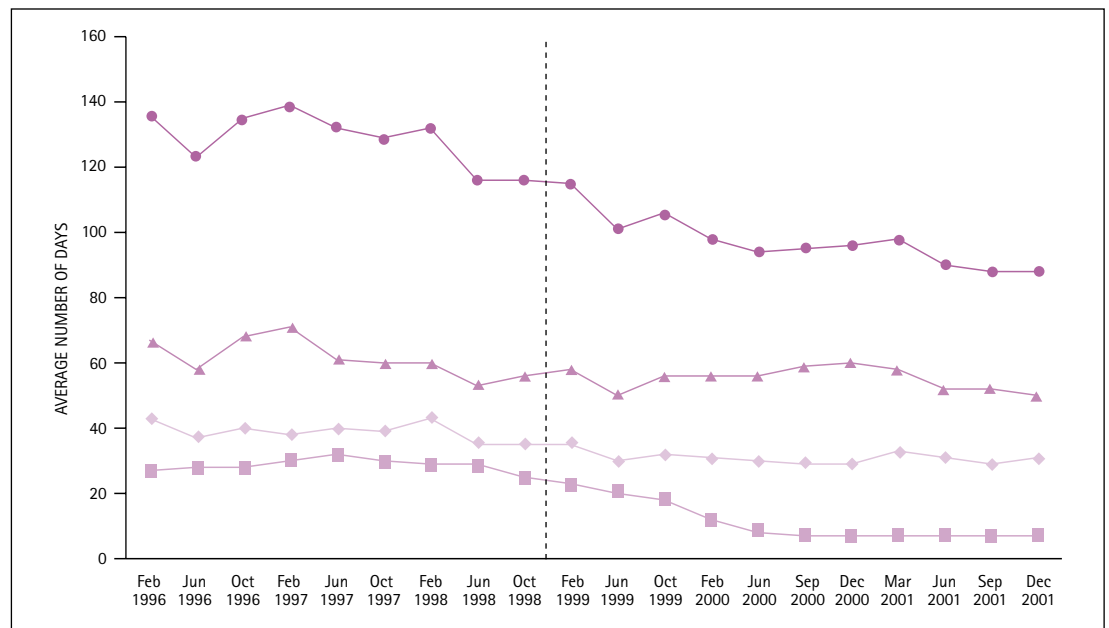
at 7 days in December 2001 and December 2000, following the substantial reduction in delay seen previously, which was a result of the national roll out of the Narey reducing delay measures (which relate to charged cases only) in November 1999. However, the average time from offence to charge or laying of information rose to 31 days in December 2001 from 29 days in December 2000. Table 3 gives more information on time intervals for defendants in indictable cases in Youth Courts.

FIGURE 2: Average time by stage of proceedings – defendants in indictable cases in Youth Courts, February 1996 to December 2001<sup>1</sup>

1 Note: The dashed vertical line in the chart denotes the changes in survey methodology introduced with the February 1999 survey (see paragraph 5 of the notes section).

### KEY

- ◆ Offence to charge or laying of information
- Charge or laying of information to first listing
- ▲ First listing to completion
- Offence to completion



## INDICTABLE CASES: 2001 ANNUAL RESULTS

### Time intervals

9. The average time from offence to completion was 111 days in 2001 overall – a decrease from 114 days in 2000. Among the constituent parts of the overall average, the average time from charge or laying of information to first listing fell from 9 days in 2000 to 8 days in 2001 and the average time from first listing to completion fell to 55 days in 2001 from 59 days in 2000. However, the average time from offence to charge or laying of information rose from 46 days in 2000 to 48 days in 2001.

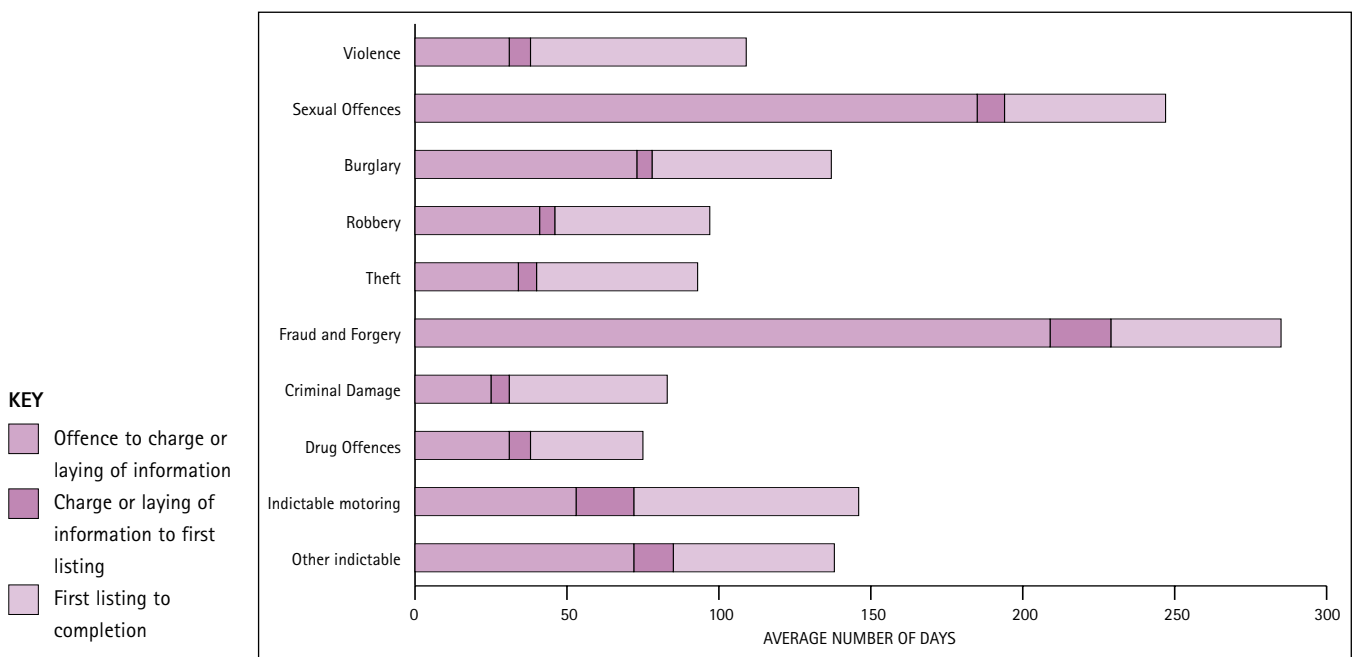
### Offence group

10. Figure 3 shows the average time taken for defendants in indictable cases by offence group and stage of proceedings in 2001. The average time from offence to charge or laying of information showed the greatest variation between offence groups. The main reason for this is that certain offences tend to take longer than

others to come to the attention of the police. In 2001 the longest average time taken from offence to charge or laying of information occurred in fraud and forgery cases – an average of 209 days – while the shortest time occurred in criminal damage cases where the average was 25 days. Table 5 gives more detailed information on time intervals by offence group.

11. The average time from offence to completion was lower in 2001 than in 2000 for all offence groups, except sexual offences (2 per cent of defendants), burglary (7 per cent of defendants) and theft and handling stolen goods (39 per cent of defendants), which showed a slight increase. Table 5 shows that the offence group accounting for the largest proportion of defendants in indictable cases was theft and handling stolen goods offences (39 per cent of defendants). For these defendants the average time from offence to completion rose to 93 days

FIGURE 3: Average time by offence group and stage of proceedings – defendants in indictable cases, 2001



in 2001 from 92 days in 2000. The average time from offence to charge or laying of information rose from 46 days in 2000 to 48 days in 2001, and the average time from charge or laying of information to first listing was 8 days – a decrease from 9 days in 2000.

12. Between 2000 and 2001 the average time from charge or laying of information to first listing fell or remained unchanged in all offence groups. The average time from first listing to completion also fell or remained unchanged in all offence groups except indictable motoring offences.

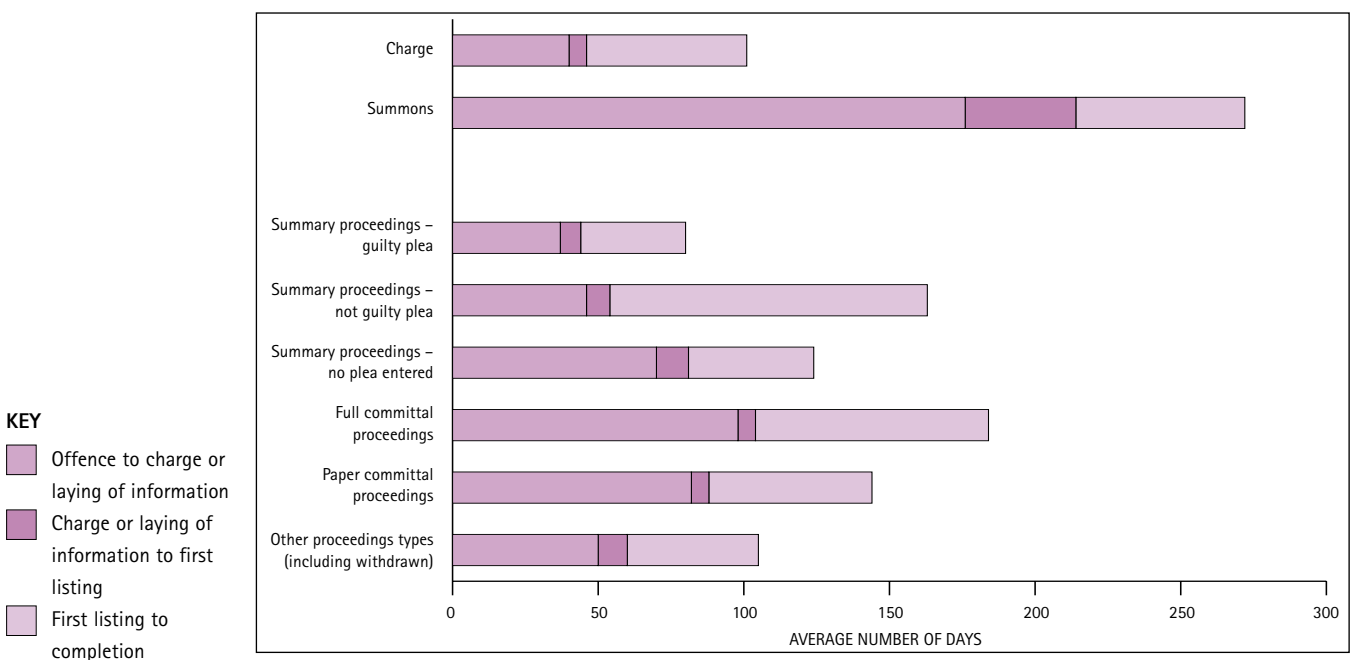
**Analysis by charge or summons and type of proceedings**

13. Figure 4 shows the average time taken for defendants in indictable cases by charge or summons, proceedings type and stage of proceedings in 2001. Detailed results for defendants in indictable cases by whether charged or summonsed can be found in table 6; while table 7 provides further information on time intervals for defendants in indictable cases by type of proceedings.

14. In 2001 overall, 94 per cent of defendants proceeded against for indictable cases were charged while the remainder were summonsed. This was unchanged from the 2000 surveys. As shown in figure 4 the average time from offence to completion was substantially longer for defendants who were summonsed than for those who were charged – 272 days for summons cases compared to 100 days for charged cases. The average time from both offence to charge or laying of information and from charge or laying of information to first listing was also longer in summons cases than in charged cases.

15. As shown in table 7 the average time from offence to completion decreased between 2000 and 2001 for defendants in summary trials (not guilty pleas), full committal proceedings and paper committal proceedings. For the one per cent of defendants in full committal proceedings the average time from offence to completion was 184 days in 2001 compared to 209 days in 2000. The shortest interval from offence to completion was for the 54 per cent of defendants who pleaded guilty – 81 days in 2001, an increase from 79 days in 2000.

**FIGURE 4: Average time by charge or summons, proceedings type and stage of proceedings – defendants in indictable cases, 2001**



16. Between 2000 and 2001 the average time from charge or laying of information to first listing fell or remained unchanged in all types of proceedings (for defendants in indictable cases). The average time from first listing to completion also fell for all proceedings types except defendants who pleaded guilty where there was a slight increase from 35 days in 2000 to 36 days in 2001.

17. Table 8 shows the average number of adjournments for defendants in indictable cases by type of proceedings. Defendants who pleaded guilty had the lowest number of adjournments with an average of 1.5 adjournments in 2001, a slight increase from 1.4 in 2000. For the 21 per cent of defendants who pleaded not guilty the average number of adjournments decreased slightly from 4.0 in 2000 to 3.9 in 2001, but this continues to be the highest number of adjournments for any type of proceedings.

**Court remands**

18. The average time from first listing to completion for defendants who were remanded in custody throughout proceedings was 36 days in

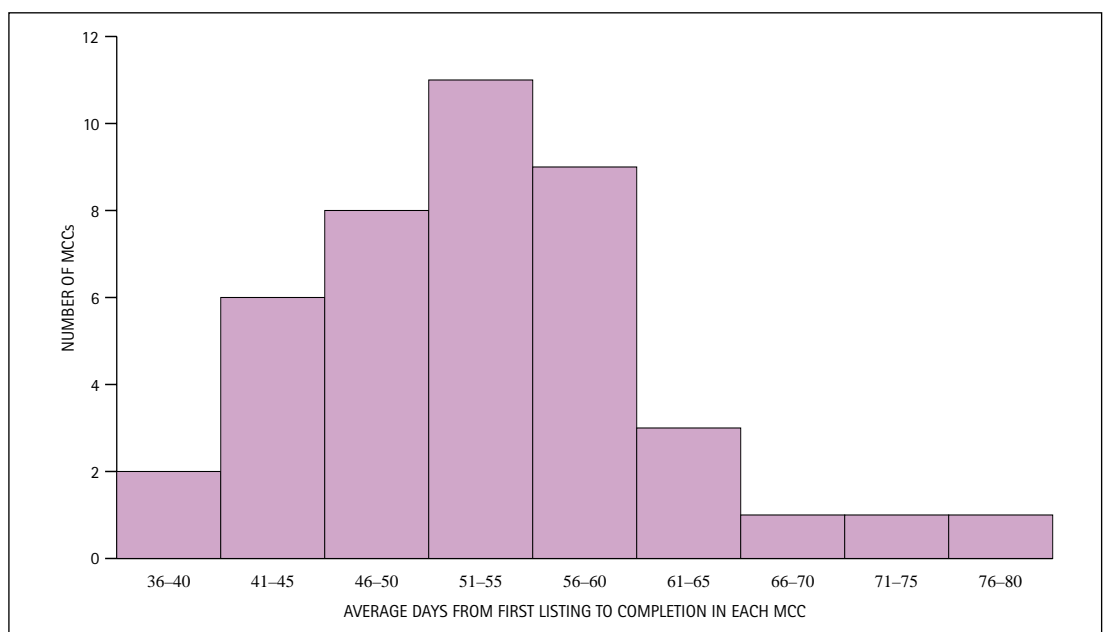
2001 – a decrease from 41 days in 2000. For defendants who were remanded in custody for part of the proceedings the average time from first listing to completion increased from 107 days in 2000 to 113 days in 2001. They spent an average of 4 whole weeks in court custody compared to defendants who were remanded in custody throughout proceedings who spent an average of 5 whole weeks in court custody. Table 9 gives further information.

**Analysis by MCC area**

19. Tables 11 and 12 give results on the average time taken for defendants in indictable cases in 2001 for Magistrates' Court Committee (MCC) areas. The tables are presented for the 42 MCCs that have been in effect from 1 April 2001. Since the figures in these tables are based on samples of defendants which may be fairly small for some areas, the figures should be interpreted with caution, especially for areas footnoted as having sample sizes of less than 100.

20. Figure 5 shows the distribution of the average time from first listing to completion for

**FIGURE 5: Magistrates' Courts Committee areas analysed by average first listing to completion time, 2001**



the 42 MCCs. As can be seen in figure 5 the average time from first listing to completion varied widely between the different areas. In 2001 the average time over this interval ranged from 37 days for Lincolnshire to 77 days for Cleveland. In comparison, the average time from first listing to completion in 2001 for England and Wales overall was 55 days.

**21.** The average time from charge or laying of information to first listing also varied widely between the 42 MCCs. In 2001 the average time over this interval varied from 4 days for Cleveland to 18 days for Dyfed-Powys. For England and Wales overall the average time from charge or laying of information to first listing in 2001 was 8 days.

**22.** For England and Wales as a whole the average time from offence to charge or laying of information to first listing in 2001 was 47 days. The average time taken varied from 28 days for Cumbria to 84 days for Hertfordshire.

**23.** Table 12 shows the average time from first listing to completion for MCCs for each year from 1996-2000. The overall decrease from 59 days in 2000 to 55 days in 2001 for England and Wales as a whole was reflected by decreases in 24 out of 42 MCCs, with increases in 17 MCCs and one MCC remaining unchanged.

**TABLE 1: Average time taken for defendants in indictable cases by stage of proceedings, 1992 to 2001**

**England and Wales**

		Average number of days from:			
		Offence to charge or laying of information	Charge or laying of information to first listing	First listing to completion	Offence to completion
1992		43	22	64	129
1993 <sup>(2)</sup>		39	25	56	120
1994 <sup>(2)</sup>		43	25	60	128
1995		43	26	61	130
1996		45	28	60	132
1997		46	29	60	135
1998		46	26	55	127
1999 old basis <sup>(1)</sup>		46	21	52	120
2000 old basis		46	8	54	108
2001 old basis		48	7	50	105
1999 new basis <sup>(1)</sup>		46	21	56	124
2000 new basis		46	9	59	114
2001 new basis		48	8	55	111
1992	February	40	22	67	129
	June	43	23	63	129
	October	44	22	63	130
1993	February <sup>(1)</sup>	40	25	60	125
	June	38	25	53	116
	October	39	24	57	121
1994	February <sup>(1)</sup>	42	25	62	129
	June	44	25	58	127
	October	42	25	62	128
1995	February	43	25	64	132
	June	45	26	60	132
	October	39	26	60	125
1996	February	46	28	60	133
	June	45	28	60	133
	October	43	27	60	130
1997	February	45	29	65	138
	June	47	30	58	136
	October	46	28	59	132
1998	February	49	27	56	133
	June	46	27	53	126
	October	43	25	55	122
1999	February old basis <sup>(1)</sup>	46	23	55	123
	June old basis	49	22	52	122
	October old basis	44	18	50	113
2000	February old basis	51	11	54	116
	June old basis	42	7	54	103
	September old basis	45	8	54	107
	December old basis	45	7	52	104
2001	March old basis	48	7	52	107
	June old basis	50	7	49	106
	September old basis	47	8	49	104
	December old basis	47	7	48	103
1999	February new basis <sup>(1)</sup>	46	23	60	129
	June new basis	49	22	54	126
	October new basis	44	18	53	116
2000	February new basis	51	12	59	121
	June new basis	42	8	60	110
	September new basis	46	8	58	112
	December new basis	46	7	58	110
2001	March new basis	48	8	57	112
	June new basis	50	8	55	113
	September new basis	47	8	56	111
	December new basis	48	7	52	107

1 See paragraph 5 of the notes section for details of the changes in survey methodology introduced with the February 1993, February 1994 and February 1999 surveys. The rows labelled *old basis* show results as they would have been if the rules that previously excluded longer cases had been applied.

**TABLE 2 : Adjudgments for defendants in indictable cases, 1992 to 2001**

**England and Wales**

1 See paragraph 5 of the notes section for details of the changes in survey methodology introduced with the February 1993, February 1994 and February 1999 surveys. The rows labelled *old basis* show results as they would have been if the rules that previously excluded longer cases had been applied.

	Average time from first listing to completion	Percentage completed at first listing	Average number of adjournments	Average length of adjournments
	Days	Per cent	Number	Days
1992	64	20	2.4	27
1993 <sup>(1)</sup>	56	21	2.3	24
1994 <sup>(1)</sup>	60	20	2.5	24
1995	61	20	2.6	24
1996	60	19	2.6	23
1997	60	20	2.6	23
1998	55	22	2.4	23
1999 old basis <sup>(1)</sup>	52	23	2.3	23
2000 old basis	54	25	2.2	24
2001 old basis	50	28	2.1	24
1999 new basis <sup>(1)</sup>	56	23	2.3	24
2000 new basis	59	25	2.3	26
2001 new basis	55	28	2.1	26
1992 February	67	19	2.5	27
1992 June	63	20	2.3	27
1992 October	63	20	2.4	26
1993 February <sup>(1)</sup>	60	21	2.4	25
1993 June	53	23	2.2	24
1993 October	57	20	2.4	24
1994 February <sup>(1)</sup>	62	21	2.4	25
1994 June	58	21	2.5	24
1994 October	62	18	2.5	24
1995 February	64	19	2.6	25
1995 June	60	21	2.5	24
1995 October	60	19	2.6	23
1996 February	60	19	2.6	23
1996 June	60	20	2.6	23
1996 October	60	19	2.6	23
1997 February	65	18	2.8	23
1997 June	58	21	2.5	23
1997 October	59	19	2.6	23
1998 February	56	23	2.5	23
1998 June	53	24	2.3	23
1998 October	55	21	2.4	23
1999 February old basis <sup>(1)</sup>	55	22	2.4	23
1999 June old basis	52	25	2.3	23
1999 October old basis	50	23	2.3	22
2000 February old basis	54	26	2.2	24
2000 June old basis	54	25	2.3	24
2000 September old basis	54	26	2.2	24
2000 December old basis	52	24	2.2	23
2001 March old basis	52	27	2.2	24
2001 June old basis	49	29	2.0	24
2001 September old basis	49	29	2.1	24
2001 December old basis	48	28	2.1	23
1999 February new basis <sup>(1)</sup>	60	22	2.4	25
1999 June new basis	54	24	2.3	24
1999 October new basis	53	23	2.3	23
2000 February new basis	59	26	2.2	26
2000 June new basis	60	25	2.3	26
2000 September new basis	58	26	2.3	26
2000 December new basis	58	23	2.3	25
2001 March new basis	57	27	2.2	26
2001 June new basis	55	28	2.1	26
2001 September new basis	56	29	2.1	26
2001 December new basis	52	28	2.1	25

**TABLE 3: Average time taken for defendants in indictable cases by stage of proceedings and type of court, 1994 to 2001**

**England and Wales**

	Offence to charge or laying of information	Average number of days from: Charge or laying of information to first listing	First listing to completion	Offence to completion	Defendants charged as a percentage of all proceeded against (per cent)	Sample size (number of defendants)
<b>Adult Courts</b>						
1994	43	25	59	128	92	18,970
1995	43	26	60	129	91	18,649
1996	46	28	59	132	93	18,124
1997	47	29	60	136	93	19,178
1998	48	26	54	128	94	19,853
1999 old basis <sup>(1)</sup>	49	21	52	123	94	19,577
2000 old basis	49	8	53	111	94	24,801
2001 old basis	51	7	49	108	93	24,746
1999 new basis <sup>(1)</sup>	49	21	56	127	94	19,720
2000 new basis	50	9	59	117	94	25,054
2001 new basis	52	8	55	115	93	25,004
1995 February	43	25	63	132	92	6,046
June	46	26	59	132	89	6,482
October	39	26	59	124	92	6,121
1996 February	47	28	59	133	93	5,865
June	47	28	60	135	92	6,201
October	43	27	58	129	92	6,058
1997 February	46	28	64	138	95	6,189
June	49	30	57	136	91	6,831
October	47	27	58	132	94	6,158
1998 February	50	27	56	133	95	6,354
June	48	27	53	128	92	6,775
October	44	24	55	124	95	6,724
1999 February old basis <sup>(1)</sup>	48	23	55	126	95	6,545
June old basis	53	22	52	127	92	6,887
October old basis	47	18	50	115	96	6,145
2000 February old basis	54	11	54	119	93	7,382
June old basis	45	7	55	107	96	5,892
September old basis	49	8	53	110	92	5,928
December old basis	49	7	51	107	95	5,599
2001 March old basis	51	7	52	110	94	6,591
June old basis	54	7	49	110	95	5,826
September old basis	50	8	49	107	92	6,149
December old basis	51	7	48	106	93	6,180
1999 February new basis <sup>(1)</sup>	48	23	61	132	95	6,605
June new basis	53	23	55	131	92	6,933
October new basis	47	19	53	118	96	6,182
2000 February new basis	54	12	59	125	93	7,455
June new basis	45	8	61	114	96	5,958
September new basis	49	8	58	115	92	5,978
December new basis	49	7	58	114	95	5,663
2001 March new basis	51	8	57	115	94	6,661
June new basis	54	8	56	117	95	5,896
September new basis	50	8	57	115	92	6,219
December new basis	52	7	52	111	93	6,228

1 See paragraph 5 of the notes section for details of the changes in survey methodology introduced with the February 1999 survey. The rows labelled *old basis* show results as they would have been if the rules that previously excluded longer cases had been applied.

**TABLE 3: Average time taken for defendants in indictable cases by stage of proceedings and type of court, 1994 to 2001 (continued)**

**England and Wales**

	Offence to charge or laying of information	Average number of days from: Charge or laying of information to first listing	First listing to completion	Offence to completion	Defendants charged as a percentage of all proceeded against (per cent)	Sample size (number of defendants)
<b>Youth Courts</b>						
1994	39	26	67	132	89	3,003
1995	40	27	67	134	89	3,539
1996	40	28	64	131	90	3,431
1997	39	30	64	134	93	3,539
1998	37	28	56	121	94	3,682
1999 old basis <sup>(1)</sup>	32	20	53	105	96	14,091
2000 old basis	30	8	55	93	97	19,100
2001 old basis	31	7	51	89	97	20,885
1999 new basis <sup>(1)</sup>	33	20	55	108	96	14,148
2000 new basis	30	8	58	96	97	19,208
2001 new basis	31	7	53	91	97	20,963
1995 February	41	26	69	136	90	1,056
June	41	27	65	133	87	1,334
October	38	27	66	132	90	1,149
1996 February	43	27	67	136	92	1,175
June	37	28	58	123	89	1,199
October	40	28	68	135	89	1,057
1997 February	38	30	71	139	93	1,144
June	40	32	61	132	94	1,266
October	39	30	60	129	92	1,129
1998 February	43	29	60	132	94	1,158
June	35	29	53	116	93	1,273
October	35	25	56	116	95	1,251
1999 February old basis <sup>(1)</sup>	35	23	56	114	96	4,873 <sup>(2)</sup>
June old basis	30	20	48	99	97	4,438
October old basis	32	18	53	103	96	4,780
2000 February old basis	31	12	53	96	97	4,939
June old basis	30	8	54	91	97	4,509
September old basis	29	7	56	92	97	4,312
December old basis	29	6	57	93	97	5,340
2001 March old basis	33	7	55	95	97	5,499
June old basis	31	7	49	87	98	4,899
September old basis	29	7	51	87	98	4,769
December old basis	31	7	49	87	97	5,718
1999 February new basis <sup>(1)</sup>	35	23	58	115	96	4,888 <sup>(2)</sup>
June new basis	30	20	50	101	97	4,457
October new basis	32	18	56	106	96	4,803
2000 February new basis	31	12	56	98	97	4,961
June new basis	30	8	56	94	97	4,531
September new basis	29	7	59	95	97	4,335
December new basis	29	7	60	96	97	5,381
2001 March new basis	33	7	58	98	97	5,527
June new basis	31	7	52	90	98	4,927
September new basis	29	7	52	88	96	4,778
December new basis	31	7	50	88	97	5,731

1 See paragraph 5 of the notes section for details of the changes in survey methodology introduced with the February 1999 survey. The rows labelled *old basis* show results as they would have been if the rules that previously excluded longer cases had been applied.

2 The higher sample size is because from February 1999 onwards the survey collects information on youth defendants over a four week period compared to a one week period previously.

**TABLE 4: Adjournments for defendants in indictable cases by type of court, 1994 to 2001**

**England and Wales**

	Average time from first listing to completion Days	Percentage completed at first listing Per cent	Average number of adjournments Number	Average length of adjournments Days
<b>Adult Courts</b>				
1994	59	21	2.4	25
1995	60	21	2.5	24
1996	59	20	2.5	23
1997	60	20	2.6	23
1998	54	23	2.4	23
1999 old basis <sup>(1)</sup>	52	24	2.3	23
2000 old basis	53	26	2.2	24
2001 old basis	49	28	2.0	25
1999 new basis <sup>(1)</sup>	56	24	2.3	24
2000 new basis	59	26	2.2	27
2001 new basis	55	28	2.1	27
1995 February	63	20	2.5	25
June	59	22	2.4	24
October	59	20	2.6	23
1996 February	59	20	2.5	23
June	60	20	2.5	24
October	58	20	2.5	23
1997 February	64	19	2.7	24
June	57	22	2.5	23
October	58	20	2.5	23
1998 February	56	23	2.4	23
June	53	24	2.3	23
October	55	21	2.4	23
1999 February old basis <sup>(1)</sup>	55	22	2.4	23
June old basis	52	25	2.2	23
October old basis	50	24	2.3	22
2000 February old basis	54	26	2.2	25
June old basis	55	26	2.2	25
September old basis	53	28	2.1	25
December old basis	51	25	2.2	24
2001 March old basis	52	29	2.1	25
June old basis	49	30	2.0	25
September old basis	49	32	2.0	25
December old basis	48	30	2.0	24
1999 February new basis <sup>(1)</sup>	61	22	2.4	25
June new basis	55	25	2.3	24
October new basis	53	24	2.3	23
2000 February new basis	59	26	2.2	27
June new basis	61	26	2.3	27
September new basis	58	27	2.2	27
December new basis	58	24	2.2	26
2001 March new basis	57	28	2.1	27
June new basis	56	30	2.0	27
September new basis	57	31	2.0	28
December new basis	52	30	2.0	26

1 See paragraph 5 of the notes section for details of the changes in survey methodology introduced with the February 1999 survey. The rows labelled *old basis* show results as they would have been if the rules that previously excluded longer cases had been applied.

**TABLE 4: Adjudgments for defendants in indictable cases by type of court, 1994 to 2001 (continued)**

**England and Wales**

	Average time from first listing to completion <b>Days</b>	Percentage completed at first listing <b>Per cent</b>	Average number of adjournments <b>Number</b>	Average length of adjournments <b>Days</b>
<b>Youth Courts</b>				
1994	67	14	3.0	22
1995	67	15	2.9	23
1996	64	16	3.0	21
1997	64	15	3.0	21
1998	56	20	2.7	21
1999 old basis <sup>(1)</sup>	53	19	2.5	21
2000 old basis	55	19	2.5	22
2001 old basis	51	20	2.5	21
1999 new basis <sup>(1)</sup>	55	19	2.5	22
2000 new basis	58	19	2.5	23
2001 new basis	53	20	2.5	21
1995 February	69	15	2.9	24
June	65	16	2.9	22
October	66	15	3.0	22
1996 February	67	14	3.1	22
June	58	18	2.9	20
October	68	15	3.1	21
1997 February	71	14	3.3	21
June	61	16	2.9	21
October	60	15	2.8	22
1998 February	60	19	2.9	21
June	53	21	2.5	21
October	56	19	2.6	21
1999 February old basis <sup>(1)</sup>	56	18	2.5	22
June old basis	48	21	2.3	21
October old basis	53	18	2.5	21
2000 February old basis	53	22	2.4	22
June old basis	54	19	2.4	22
September old basis	56	18	2.6	22
December old basis	57	19	2.6	22
2001 March old basis	55	20	2.5	22
June old basis	49	21	2.3	21
September old basis	51	19	2.5	20
December old basis	49	19	2.5	19
1999 February new basis <sup>(1)</sup>	58	18	2.5	23
June new basis	50	21	2.3	21
October new basis	56	18	2.5	22
2000 February new basis	56	22	2.4	23
June new basis	56	19	2.5	23
September new basis	59	18	2.6	23
December new basis	60	18	2.6	23
2001 March new basis	58	20	2.5	23
June new basis	52	21	2.4	22
September new basis	52	19	2.5	21
December new basis	50	19	2.5	20

1 See paragraph 5 of the notes section for details of the changes in survey methodology introduced with the February 1999 survey. The rows labelled *old basis* show results as they would have been if the rules that previously excluded longer cases had been applied.

**TABLE 5: Average time taken for defendants in indictable cases by offence group and stage of proceedings, 1996 to 2001**

	1996	1997	1998	1999 old basis <sup>(1)</sup>	Days 2000 old basis	2001 old basis	1999 new basis <sup>(1)</sup>	2000 new basis	2001 new basis
<b>England and Wales</b>									
<b>Offence group and stage, average time Taken in days</b>									
<b>Violence against the person</b>									
Offence to charge or laying of information	30	30	31	31	30	31	31	30	31
Charge or laying of information to first listing	28	29	28	24	8	7	24	8	7
First listing date to completion	67	69	66	64	73	67	65	76	71
Offence to completion	124	127	124	118	111	104	120	114	109
<b>Sexual offences</b>									
Offence to charge or laying of information	148	142	169	211	166	186	211	165	185
Charge or laying of information to first listing	25	25	22	22	9	9	22	9	9
First listing date to completion	60	66	67	55	65	51	55	69	53
Offence to completion	233	234	257	289	240	246	289	243	247
<b>Burglary</b>									
Offence to charge or laying of information	35	48	47	58	65	73	58	65	73
Charge or laying of information to first listing	24	26	22	18	7	5	18	7	5
First listing date to completion	71	69	62	59	60	54	64	65	59
Offence to completion	130	143	131	134	132	132	140	137	138
<b>Robbery</b>									
Offence to charge or laying of information	33	30	40	41	40	40	40	40	41
Charge or laying of information to first listing	17	19	18	15	5	5	15	5	5
First listing date to completion	82	74	68	67	66	47	67	67	51
Offence to completion	133	123	126	122	111	93	122	112	96
<b>Theft and handling stolen goods</b>									
Offence to charge or laying of information	38	38	35	33	32	33	33	32	34
Charge or laying of information to first listing	28	29	25	18	6	6	19	7	6
First listing date to completion	56	57	51	48	46	47	53	53	53
Offence to completion	122	124	112	99	85	86	105	92	93
<b>Fraud and forgery</b>									
Offence to charge or laying of information	145	151	176	188	193	209	188	200	209
Charge or laying of information to first listing	35	33	35	29	19	19	29	21	20
First listing date to completion	58	60	57	60	55	49	65	64	56
Offence to completion	238	243	268	276	268	277	282	285	285
<b>Criminal damage</b>									
Offence to charge or laying of information	24	25	26	26	24	24	26	24	25
Charge or laying of information to first listing	28	30	28	21	8	6	21	8	6
First listing date to completion	51	49	45	45	47	49	47	54	52
Offence to completion	103	103	98	93	79	79	94	86	83
<b>Drugs offences</b>									
Offence to charge or laying of information	38	32	30	31	32	31	31	32	31
Charge or laying of information to first listing	29	30	26	21	7	7	21	7	7
First listing date to completion	44	43	39	37	35	33	40	38	37
Offence to completion	111	105	95	89	74	70	92	77	75

<sup>1</sup> See paragraph 5 of the notes section for details of the changes in survey methodology introduced with the February 1999 survey. The rows labelled *old basis* show results as they would have been if the rules that previously excluded longer cases had been applied.

**TABLE 5: Average time taken for defendants in indictable cases by offence group and stage of proceedings, 1996 to 2001 (continued)**

	1996	1997	1998	Days					
				1999 old basis <sup>(1)</sup>	2000 old basis	2001 old basis	1999 new basis <sup>(1)</sup>	2000 new basis	2001 new basis
<b>England and Wales</b>									
<b>Offence group and stage, average time Taken in days</b>									
Indictable motoring offences									
Offence to charge or laying of information	53	60	60	48	55	52	48	56	53
Charge or laying of information to first listing	30	31	30	33	22	18	34	22	19
First listing date to completion	65	64	60	56	66	51	62	70	74
Offence to completion	148	155	150	136	143	122	144	149	145
Other indictable offences									
Offence to charge or laying of information	61	70	67	68	72	72	68	71	72
Charge or laying of information to first listing	28	32	28	25	14	13	25	14	13
First listing date to completion	64	68	60	60	60	50	62	65	53
Offence to completion	154	171	155	153	146	135	155	151	138
Total all indictable offences									
Offence to charge or laying of information	45	46	46	46	46	48	46	46	48
Charge or laying of information to first listing	28	29	26	21	8	7	21	9	8
First listing date to completion	60	60	55	52	54	50	56	59	55
Offence to completion	132	135	127	120	108	105	124	114	111
<b>Percentages</b>									
<b>England and Wales</b>									
<b>Defendants as a percentage of all those Proceeded against for indictable offences</b>									
Violence against the person	16	18	17	16	17	17	16	17	17
Sexual offences	2	2	2	2	2	2	2	2	2
Burglary	10	10	9	9	8	7	9	8	7
Robbery	2	2	2	2	2	2	2	2	2
Theft and handling stolen goods	39	38	38	38	39	39	38	40	39
Fraud and forgery	4	4	4	4	3	3	4	3	3
Criminal damage	5	4	6	6	7	7	6	7	7
Drugs offences	9	10	12	12	10	11	12	10	11
Indictable motoring offences	3	3	2	3	2	2	3	2	2
Other indictable offences	10	10	10	9	9	9	9	9	9
Total all indictable offences	100	100	100	100	100	100	100	100	100
<i>Sample size</i>	<i>21,555</i>	<i>22,717</i>	<i>23,535</i>	<i>23,298</i>	<i>29,927</i>	<i>30,077</i>	<i>23,451</i>	<i>30,199</i>	<i>30,354</i>

1 See paragraph 5 of the notes section for details of the changes in survey methodology introduced with the February 1999 survey. The rows labelled *old basis* show results as they would have been if the rules that previously excluded longer cases had been applied.

1 See paragraph 5 of the notes section for details of the changes in survey methodology introduced with the February 1999 survey. The rows labelled *old basis* show results as they would have been if the rules that previously excluded longer cases had been applied.

**TABLE 6: Average time taken for defendants in indictable cases by charge or summons and stage of proceedings, 1996 to 2001**

	1996	1997	1998	1999 old basis <sup>(1)</sup>	2000 old basis	2001 old basis	1999 new basis <sup>(1)</sup>	2000 new basis	2001 new basis
<b>England and Wales</b>									
<b>Charge or summons and stage, average time in days</b>									
Defendants charged									
Offence to charge	38	38	38	39	38	40	39	38	40
Charge to first listing	27	28	26	20	7	5	20	7	6
First listing to completion	60	61	55	52	54	50	56	59	55
Offence to completion	125	127	119	112	98	95	116	104	100
Defendants summonsed									
Offence to laying of information	129	154	164	173	188	176	172	190	176
Laying of information to first listing	36	41	37	39	39	37	39	41	38
First listing to completion	57	55	52	51	49	47	57	56	58
Offence to completion	221	251	253	262	276	260	267	287	272
<b>Defendants as a percentage of all Proceeded against for indictable offences</b>									
Defendants charged	92	93	94	95	95	94	95	94	94
Defendants summonsed	8	7	6	5	5	6	5	6	6

1 See paragraph 5 of the notes section for details of the changes in survey methodology introduced with the February 1999 survey. The columns labelled *old basis* show results as they would have been if the rules that previously excluded longer cases had been applied.

**TABLE 7 : Average time taken for defendants in indictable cases by proceedings type and stage of proceedings, 1996 to 2001**

	Days and Percentages								
	1996	1997	1998	1999 old basis <sup>(1)</sup>	2000 old basis	2001 old basis	1999 new basis <sup>(1)</sup>	2000 new basis	2001 new basis
<b>England and Wales</b>									
<b>Proceedings type and stage, average time in days</b>									
Summary trial (guilty plea)									
Offence to charge or laying of information	36	37	38	36	37	37	36	37	37
Charge or laying of information to first listing	29	30	26	19	8	7	19	8	7
First listing date to completion	40	39	36	34	31	32	37	35	36
Offence to completion	105	106	100	89	75	77	92	79	81
Summary trial (not guilty plea)									
Offence to charge or laying of information	42	44	45	40	42	46	41	42	46
Charge or laying of information to first listing	30	30	29	25	10	8	25	10	8
First listing date to completion	106	105	102	101	106	101	106	112	109
Offence to completion	178	179	176	166	158	155	171	165	163
Summary trial (no plea recorded)									
Offence to charge or laying of information	55	50	45	59	65	70	59	66	70
Charge or laying of information to first listing	29	33	28	24	11	10	25	11	11
First listing date to completion	44	45	44	44	46	38	54	61	43
Offence to completion	127	128	117	127	122	118	138	138	124
Full committal proceedings									
Offence to charge or laying of information	57	90	98	63	103	94	63	102	96
Charge or laying of information to first listing	20	23	22	18	12	6	18	13	6
First listing date to completion	115	137	105	88	89	69	88	94	80
Offence to completion	192	250	225	169	205	169	169	209	184
Paper committal proceedings									
Offence to charge or laying of information	71	69	75	89	81	82	88	82	82
Charge or laying of information to first listing	23	24	23	20	7	6	20	8	6
First listing date to completion	79	82	80	74	76	53	77	79	56
Offence to completion	174	175	177	183	164	140	185	169	143
Other proceedings									
Offence to charge or laying of information	43	43	45	50	44	50	50	45	50
Charge or laying of information to first listing	29	30	29	26	9	9	26	10	10
First listing date to completion	41	43	41	36	38	36	41	45	45
Offence to completion	112	116	114	111	91	95	117	99	104
Total all indictable offences									
Offence to charge or laying of information	45	46	46	46	46	48	46	46	48
Charge or laying of information to first listing	28	29	26	21	8	7	21	9	8
First listing date to completion	60	60	55	52	54	50	56	59	55
Offence to completion	132	135	127	120	108	105	124	114	111
<b>Defendants as a percentage of proceeded Against for indictable offences</b>									
Summary trial (guilty plea)	50	50	54	55	55	54	55	55	54
Summary trial (not guilty plea)	17	17	17	18	20	22	18	20	21
Summary trial (no plea recorded)	4	4	4	5	6	7	5	6	7
Full committal proceedings	2	2	1	1	1	1	1	1	1
Paper committal proceedings	16	18	14	13	13	12	13	13	12
Other proceedings	10	10	9	8	6	5	8	6	5
<b>Total all indictable offences</b>	100	100	100	100	100	100	100	100	100
<i>Sample size</i>	21,555	22,717	23,535	23,298	29,927	30,077	23,451	30,199	30,354

1 See paragraph 5 of the notes section for details of the changes in survey methodology introduced with the February 1999 survey. The columns labelled *old basis* shows results as they would have been if the rules that previously excluded longer cases had been applied.

**TABLE 8 : Average number of adjournments for defendants in indictable cases by proceedings type, 1996 to 2001**

	1996	1997	1998	1999 old basis <sup>(1)</sup>	2000 old basis	2001 old basis	1999 new basis <sup>(1)</sup>	2000 new basis	2001 new basis
<b>England and Wales</b>									
Summary trial (guilty plea)	1.9	1.8	1.7	1.6	1.4	1.5	1.6	1.4	1.5
Summary trial (not guilty plea)	4.0	4.1	4.0	4.0	3.9	3.8	4.0	4.0	3.9
Summary trial (no plea recorded)	1.9	1.8	2.0	2.0	2.1	1.7	2.0	2.1	1.7
Full committal proceedings	5.8	5.6	4.9	4.1	3.5	2.7	4.1	3.6	2.9
Paper committal proceedings	3.6	3.8	3.6	3.5	3.3	2.3	3.5	3.3	2.3
Other proceedings	1.8	1.9	1.8	1.7	1.7	1.6	1.7	1.8	1.7
All proceedings types	2.6	2.6	2.4	2.3	2.2	2.1	2.3	2.3	2.1

1 See paragraph 5 of the notes section for details of the changes in survey methodology introduced with the February 1994 and February 1999 surveys. The columns labelled *old basis* shows results as they would have been if the rules that previously excluded longer cases had been applied.

**TABLE 9 : Average time from first listing to completion by proceedings type and average number of whole weeks in court custody, England and Wales, 1996 to 2001**

	1996	1997	1998	1999 old basis <sup>(1)</sup>	2000 old basis	2001 old basis	1999 new basis <sup>(1)</sup>	2000 new basis	2001 new basis
<b>England and Wales</b>									
<b>Defendants remanded in custody throughout proceedings:</b>									
Days from first listing to completion by proceedings type									
Summary trial (guilty plea)	38	33	30	27	27	26	27	27	26
Summary trial (not guilty plea)	[56]	[51]	[51]	[46]	46	43	[46]	46	43
Summary trial (no plea recorded)	[54]	[42]	[72]	[48]	[43]	[41]	[48]	[43]	[41]
Full committal proceedings	[77]	[86]	[69]	[62]	[62]	[41]	[62]	[62]	[41]
Paper committal proceedings	57	59	55	55	52	46	55	52	46
Other proceedings	[44]	[41]	[40]	[34]	[36]	[39]	[34]	[36]	[39]
All proceedings types	53	51	45	43	41	36	43	41	36
Average whole weeks in court custody	7	7	6	6	6	5	6	6	5
<b>Defendants remanded in custody for part of the proceedings:</b>									
Days from first listing to completion by proceedings type									
Summary trial (guilty plea)	102	102	95	93	89	94	106	104	104
Summary trial (not guilty plea)	126	129	126	118	117	117	131	129	127
Summary trial (no plea recorded)	[95]	[76]	[83]	[89]	[88]	[92]	[95]	[98]	[103]
Full committal proceedings	[131]	[125]	[163]	[91]	[84]	[136]	[91]	[84]	[136]
Paper committal proceedings	98	102	94	89	88	90	96	100	115
Other proceedings	[85]	[90]	[83]	[79]	[69]	[76]	[104]	[76]	[145]
All proceedings types	106	106	101	96	95	99	107	107	113
Average whole weeks in court custody	5	5	5	4	4	4	4	4	4

1 See paragraph 5 of the notes section for details of the changes in survey methodology introduced with the February 1999 survey. The columns labelled *old basis* shows results as they would have been if the rules that previously excluded longer cases had been applied.

2 Figures in [square brackets] are based on less than 200 defendants: averages based on small numbers of defendants are less reliable and subject to greater error.

**TABLE 10: Average time taken for defendants charged(1) in indictable cases by stage of proceedings, 1994 to 2001**

**England and Wales**

	Offence to charge	Average number of days from:		Offence to completion	
		Charge to first listing	First listing to completion		
1 The figures in this table exclude defendants who were summonsed to appear in court.	1994	24	61	121	
	1995	25	62	121	
	1996	27	60	125	
	1997	28	61	127	
2 See paragraph 5 of the notes section for details of the changes in survey methodology introduced with the February 1999 survey. The rows labelled <i>old basis</i> show results as they would have been if the rules that previously excluded longer cases had been applied.	1998	26	55	119	
	1999 old basis <sup>(2)</sup>	20	52	112	
	2000 old basis	7	54	98	
	2001 old basis	5	50	95	
	1999 new basis <sup>(2)</sup>	20	56	116	
	2000 new basis	7	59	104	
	2001 new basis	6	55	100	
	1994 February	36	24	61	121
	June	36	24	58	119
	October	35	24	63	122
	1995 February	37	24	66	126
	June	35	25	61	121
	October	32	25	60	117
	1996 February	40	27	60	127
	June	37	27	60	124
	October	36	27	60	123
1997 February	38	28	65	131	
June	37	29	59	124	
October	39	27	59	125	
1998 February	42	27	57	125	
June	38	26	53	117	
October	36	24	55	115	
1999 February old basis <sup>(2)</sup>	39	22	55	115	
June old basis	41	21	52	113	
October old basis	39	17	50	106	
2000 February old basis	42	9	55	105	
June old basis	35	6	54	95	
September old basis	35	6	55	96	
December old basis	38	5	52	95	
2001 March old basis	38	5	52	96	
June old basis	42	6	49	97	
September old basis	38	6	50	94	
December old basis	40	5	49	94	
1999 February new basis <sup>(2)</sup>	39	22	59	120	
June new basis	41	21	55	117	
October new basis	39	18	54	110	
2000 February new basis	41	9	59	110	
June new basis	36	6	59	101	
September new basis	36	6	59	100	
December new basis	38	5	58	101	
2001 March new basis	38	6	56	100	
June new basis	42	6	55	103	
September new basis	38	6	56	100	
December new basis	40	5	53	98	

**TABLE 11: Average time taken for defendants in indictable cases by stage of proceedings and by Magistrates' Courts Committee area, 2001**

**England and Wales**

	Offence to charge or laying of information	Charge or laying of information to first listing	Average number of days from:		Average number of Adjournments from first listing to completion
			First listing to completion	Offence to completion	
Avon and Somerset	46	8	51	105	2.3
Bedfordshire	43	7	54	104	2.2
Cambridgeshire	48	11	47	107	1.7
Cheshire	31	8	57	96	2.0
Cleveland	43	4	77	123	3.2
Cumbria	28	7	43	78	1.9
Derbyshire	61	12	60	133	2.4
Devon and Cornwall	52	8	44	104	1.7
Dorset	48	9	43	100	1.6
Durham	45	8	52	105	2.2
Dyfed Powys	62	18	42	121	1.6
Essex	61	9	51	121	1.7
Gloucestershire	38	10	48	95	2.0
GLMCA <sup>(1)</sup>	47	9	53	108	2.1
Greater Manchester <sup>(1)</sup>	53	5	56	114	2.1
Gwent	52	11	48	111	2.2
Hampshire and Isle of Wight	47	8	60	114	1.8
Hertfordshire	84	7	59	150	2.4
Humberside	52	7	52	111	2.4
Kent	37	7	40	84	1.6
Lancashire	31	4	50	85	2.2
Leicestershire	71	7	49	126	2.0
Lincolnshire	48	9	37	94	1.6
Merseyside	51	5	62	118	2.2
Norfolk	30	7	43	80	1.7
North Wales	40	8	60	108	2.7
North Yorkshire	47	5	41	93	2.1
Northamptonshire	37	10	63	110	2.5
Northumbria	38	5	56	99	2.5
Nottinghamshire	46	8	48	102	1.9
South Wales	43	8	54	105	2.4
South Yorkshire <sup>(1)</sup>	38	11	51	100	2.1
Staffordshire	50	8	61	119	2.3
Suffolk	57	9	58	124	2.1
Surrey	72	8	47	127	1.8
Sussex <sup>(1)</sup>	72	8	55	136	2.3
Thames Valley	41	7	55	102	2.5
Warwickshire	51	10	47	109	1.8
West Mercia <sup>(1)</sup>	63	11	59	133	2.2
West Midlands	53	7	72	131	2.2
West Yorkshire	45	7	53	106	2.0
Wiltshire	58	9	70	136	1.8
<b>All England and Wales</b>	<b>47</b>	<b>8</b>	<b>55</b>	<b>111</b>	<b>2.1</b>

1 See paragraph 15 of the notes section for details of MCC amalgamations. These MCCs came into effect from 1 April 2001.

**TABLE 12 : Average time taken from first listing to completion by Magistrates' Courts Committee area, 1996 to 2001**

	Average number of days from first listing to completion:									
	1996	1997	1998	1999 old basis <sup>(1)</sup>	2000 old basis	2001 old basis	1999 new basis <sup>(1)</sup>	2000 new basis	2001 new basis	
<b>England and Wales</b>										
1 See paragraph 5 of the notes section for details of the changes in survey methodology introduced with the February 1999 survey. The columns labelled <i>old basis</i> shows results as they would have been if the rules that previously excluded longer cases had been applied.	Avon and Somerset <sup>(2)</sup>	48	65	49	53	53	48	56	66	51
	Bedfordshire	51	64	44	46	43	47	48	43	54
	Cambridgeshire	66	61	56	45	46	43	45	66	47
	Cheshire	65	64	60	47	54	49	51	63	57
	Cleveland	77	74	55	56	62	64	56	64	77
	Cumbria	42	40	57	55	51	41	59	61	43
	Derbyshire	76	74	56	57	63	55	57	72	60
	Devon and Cornwall	44	48	48	40	37	36	40	38	44
	Dorset	65	57	37	33	35	41	33	38	43
	Durham	56	58	53	41	40	50	41	44	52
	Dyfed Powys <sup>(2)</sup>	45	50	42	53	48	40	53	51	42
	Essex	64	57	64	45	44	45	46	48	51
2 See paragraph 15 of the notes section for details of MCC amalgamations. Results for these MCCs prior to their creation are based on results of the old MCCs which were amalgamated.	Gloucestershire	55	57	47	52	43	46	52	45	48
	GLMCA <sup>(2)</sup>	51	50	47	45	48	48	49	51	53
	Greater Manchester <sup>(2)</sup>	59	57	56	52	59	49	54	62	56
	Gwent	48	57	46	47	44	48	47	44	48
	Hampshire and Isle of Wight <sup>(2)</sup>	75	70	71	56	51	49	60	55	60
	Hertfordshire	52	54	54	55	56	55	56	57	59
	Humberside	70	61	59	54	55	52	55	56	52
	Kent	50	58	50	45	53	38	48	53	40
	Lancashire	55	49	45	50	46	48	54	50	50
	Leicestershire	79	75	50	47	57	47	50	59	49
	Lincolnshire	58	58	54	59	56	36	59	58	37
	Merseyside	71	75	56	57	61	53	67	69	62
	Norfolk	48	54	43	46	44	42	46	44	43
	North Wales	58	51	40	48	48	57	48	50	60
	North Yorkshire	39	48	47	40	40	41	40	40	41
	Northamptonshire	76	111	70	54	48	52	57	48	63
	Northumbria <sup>(2)</sup>	67	64	51	54	54	52	59	59	56
	Nottinghamshire	68	58	56	60	56	45	61	60	48
	South Wales <sup>(2)</sup>	56	59	55	55	57	52	59	57	54
	South Yorkshire <sup>(2)</sup>	63	61	57	55	55	51	56	61	51
	Staffordshire	65	69	55	70	69	56	77	74	61
	Suffolk	47	58	54	44	54	50	59	63	58
	Surrey	52	58	49	45	47	45	45	50	47
	Sussex <sup>(2)</sup>	59	65	63	57	51	53	60	53	55
	Thames Valley	58	70	63	52	45	52	55	45	55
	Warwickshire	54	45	39	33	33	38	37	37	47
	West Mercia <sup>(2)</sup>	65	66	61	55	57	52	58	65	59
	West Midlands	72	69	73	76	75	63	90	95	72
	West Yorkshire <sup>(2)</sup>	68	72	66	55	55	47	59	58	53
	Wiltshire	52	55	55	36	45	46	38	55	70
	<b>All England and Wales</b>	<b>60</b>	<b>60</b>	<b>55</b>	<b>52</b>	<b>54</b>	<b>50</b>	<b>56</b>	<b>59</b>	<b>55</b>

## NOTES

### Methodology

1. In 1999 and earlier years clerkships provided details of all defendants in indictable cases in magistrates' courts against whom proceedings were completed in selected sample weeks in February, June and October of each year. Information on summary offences was requested in the June one week sample only. From the February 1999 survey onwards information on youth defendants in all criminal cases is collected in a four week period ending at the same time as the selected main sample week of each survey. In addition, from February 1999 onwards each survey collects data on all persistent young offender cases completed since the end of the previous survey. Starting with the February 2000 survey there is now one survey in each quarter with two of these (first and third quarter) collecting the additional information on summary offences. The completed proceedings on which information is provided includes cases committed to the Crown Court and those dismissed or discharged as well as those in which a sentence was passed. For each defendant selected details of the case are recorded (for example, offence, type of proceedings and type of completion) together with the dates of certain stages of proceedings.

2. The figures in this bulletin are based on defendants. Where a case involves more than one defendant, each defendant is considered individually.

3. In bulletins in 1998 and earlier years the date of charge or laying of information was simplified to the date of charge or summons. From 1999 onwards bulletins use the exact definition of the date requested in the survey –

the date of charge or laying of information. Therefore the interval from offence to charge or summons previously reported on is now defined as the interval from offence to charge or laying of information. Similarly the interval from charge or summons to first listing has been re-defined as the interval from charge or laying of information to first listing. As the date used in the calculations is exactly the same this change has not affected results.

### Quality and completeness of the data

4. Data is transferred on computer disk from the clerkships to Magistrates' Courts Administration Division at the Lord Chancellor's Department. Checks on the consistency of the data are made (for example that dates are in chronological order) and returns found to be in error are returned for correction. In addition any records which appear implausible are referred back to the court for confirmation.

5. Starting with the February 1993 survey there have been several changes in recording procedures, which will have led to small discontinuities in the data series. These are signified by vertical separations in the charts. They are as follows:

February 1993

- Cases adjourned sine die are not counted until finally disposed of.
- From the February 1993 survey to the October 1998 survey cases were excluded which took more than one year to complete (from either charge or laying of information to first listing, or first listing to completion) for reasons which appeared to

be beyond the control of the court, for example, where the defendant absconded. It is estimated that this change reduced the average interval from offence to completion by about 7.5 days for indictable offences in 1992, the last year before the change. Almost all this difference was due to a lower average time from first listing to completion.

#### February 1994

- Records where the defendant was charged or had information laid against them over ten years after the offence occurred have been excluded from the February 1994 survey onwards. This affected very few defendants but it is estimated that it would have reduced the average time from offence to completion by 1.5 days in 1992 for indictable offences. Virtually all this change was in the offence to charge or laying of information interval rather than the period after charge or laying of information.

#### February 1999

- The rules that previously excluded longer cases (lasting over a year from either charge or laying of information to first listing, or first listing to completion) were not applied for surveys from February 1999 onwards. No longer applying the rules which excluded longer cases increased the average time from offence to completion for defendants in indictable cases in 1999 to 124 days from 120 days and the average time from first listing to completion to 56 days from 52 days. Unless stated, all results in this bulletin are on the new basis. The rules were removed in order to ensure this aspect of the survey is compatible with the

statistics on delay used for monitoring the Government's pledge to halve the time from arrest to sentence for persistent young offenders. These are based on data from the Police National Computer not the Time Intervals Survey.

6. In February 1999 new data collection software was introduced following testing in 6 clerkships in the October 1998 survey. For the October 1999 survey a second version of the software was introduced which performed additional validations on the data and also produced local reports from the data entered. Guidance on the collection of data is included in the magistrates' courts management information system good practice guide (available from Linda Myles at the address below).

7. Figures in the text and tables may not sum exactly to totals because the numbers in this bulletin have been rounded independently of each other.

8. In the past some Petty Sessions Areas (PSAs) and clerkships have sometimes been unable to participate in the collection of data due to local circumstances. The table gives the estimated completeness of the data and the number of defendants in each October/December sample of criminal proceedings. The term completeness in this table refers to the proportion of clerkships (or PSAs before 1994 – see below) supplying data. It does not refer to the proportion of all cases completed during each sample week on which time intervals data was not returned by clerkships (or PSAs before 1994). This would almost certainly be lower. For this reason, and short term and seasonal variation, the figures here for number of defendants are unlikely to provide a reliable indicator of the changes in magistrates' courts caseload.

**Proportion of clerkships (or PSAs before 1994) making returns and sample sizes, October surveys and December 2000 and 2001 survey**

Collection week	Proportion of clerkships (or PSAs before 1994) making returns (per cent)	Number of defendants
October 1985	96.2	9,643
October 1986	95.3	8,780
October 1987	93.9	9,348
October 1988	91.2	7,720
October 1989	93.5	8,246
October 1990	96.6	8,399
October 1991	97.0	8,507
October 1992	97.0	8,473
October 1993	98.7	7,873
October 1994	96.9	7,399
October 1995	100.0	7,270
October 1996	100.0	7,115
October 1997	100.0	7,287
October 1998	100.0	7,975
October 1999	100.0	7,347 <sup>(1)</sup>
December 2000	99.4	7,050
December 2001	99.4	7,704

1 The sample sizes for October 1999 onwards are from the one week sample only. Table 5 shows Youth Court sample sizes for defendants in indictable cases in the four week survey.

**MCC amalgamations**

9. This bulletin contains tables presented for 2001. Results for merged MCCs are based on the 42 MCCs which came into effect on 1 April 2001. Results of the old MCCs which were amalgamated.

**MCC amalgamations**

Date	Amalgamated MCCs	Old MCCs
1 April 1996	Berkshire and Oxfordshire	Berkshire, Oxfordshire
1 April 1996	North Wales	Clwyd, Gwynedd
1 April 1996	South Wales	Mid Glamorgan, South Glamorgan
1 April 1996	West Riding Metropolitan	Bradford, Kirklees, Wakefield
1 April 1997	North and West Greater Manchester	Bolton, Bury, Rochdale, Salford, Wigan
1 April 1999	Devon and Cornwall	Devon, Cornwall
1 April 1999	Merseyside	Knowsley, Liverpool, St Helens, Sefton, Wirral
1 April 1999	Thames Valley	Berkshire and Oxfordshire, Buckinghamshire
1 April 1999	West Midlands	Birmingham, Coventry, Dudley, Sandwell, Solihull, Walsall, Wolverhampton
1 April 2000	Avon and Somerset	Avon, Somerset
1 April 2000	Dyfed Powys	Dyfed, Powys
1 April 2000	Hampshire and Isle of Wight	Hampshire, Isle of Wight
1 April 2000	Northumbria	Gateshead, Newcastle upon Tyne, North Tyneside, Northumberland, South Tyneside, Sunderland
1 April 2000	South Wales	South Wales, West Glamorgan
1 April 2000	West Yorkshire	Calderdale, Leeds, West Riding
1 April 2001	Greater London Magistrates' Courts Authority	Barking and Dagenham, Barnet, Bexley, Brent, Bromley, City of London, Croydon, Ealing, Enfield, Haringey, Harrow, Havering, Hillingdon, Hounslow, Inner London, Kingston upon Thames, Merton, Newham, Redbridge, Richmond upon Thames, Sutton, Waltham Forest
1 April 2001	Greater Manchester	Manchester, North and West Greater Manchester, Oldham, Stockport, Tameside, Trafford
1 April 2001	South Yorkshire	Barnsley, Doncaster, Rotherham, Sheffield
1 April 2001	Sussex	East Sussex, West Sussex
1 April 2001	West Mercia	Hereford and Worcester, Shropshire

### **Court remands**

10. For defendants remanded by the court the number of whole weeks of bail and custodial remands were recorded. Those defendants remanded in custody were identified only where the period of the remand was one week or more; similarly defendants were only recorded as remanded on bail if the period of bail was one week or more. Defendants classified as remanded in custody throughout the proceedings are those for whom time on court remand in custody but no bail was recorded and the number of weeks in custody was equal to the time from first listing to completion (after allowing for rounding down of the number of weeks in custody). For such defendants, the number of weeks in custody is not directly comparable with the length of the interval from first listing to completion for three reasons:

- since only whole weeks of custody were recorded, the total time in custody was frequently a few days longer than that recorded
- the proceedings may not commence on the first listing date (the date on which the case was initially scheduled to appear before the court) and the time between first listing and the first appearance at court would be included in the interval from first listing to completion, but the defendant could not have been remanded by the court until the first court appearance
- a defendant remanded in custody for part of the proceedings but granted bail for less than one week would be classified as remanded in custody throughout

### **Previous bulletins**

11. Statistical Bulletins containing data from Time Intervals Surveys up to and including October 1993 were produced by the Home Office's Research and Statistics Directorate. The Lord Chancellor's Department took over responsibility for the surveys from 1 January 1994. When the Home Office conducted the survey the data was collected directly from PSAs rather than clerkships as currently.

### **Further Information**

12. This bulletin has been prepared by the Information Management Unit and Magistrates' Courts Administration Division in the Lord Chancellor's Department. Comments on this publication or suggestions would be welcomed. If you have any enquiries about figures in this bulletin or wish to request further analysis of the data (a fee may be charged) contact Jacqueline O'Brien at the address below:

Jacqueline O'Brien  
Information Management Unit  
Lord Chancellor's Department  
Room 9.23  
Selborne House  
54-60 Victoria Street  
London SW1E 6QW  
Tel: 020 7210 8824  
email: [jacquie.obrien@lcdhq.gsi.gov.uk](mailto:jacquie.obrien@lcdhq.gsi.gov.uk)

**13.** For further copies of this bulletin contact Linda Myles at the following address:

Linda Myles  
Magistrates' Courts Administration Division  
Court Service  
4th Floor  
Selborne House  
54-60 Victoria Street  
London SW1E 6QW  
Tel: 020 7210 8691  
email: [linda.myles@courtservice.gsi.gov.uk](mailto:linda.myles@courtservice.gsi.gov.uk)

**14.** Press enquiries should be addressed to:

Press Office  
Lord Chancellor's Department  
7th Floor  
Selborne House  
54-60 Victoria Street  
London SW1E 6QW  
Tel: 020 7210 8512/8513  
email: [press.office@lcdhq.gsi.gov.uk](mailto:press.office@lcdhq.gsi.gov.uk)

